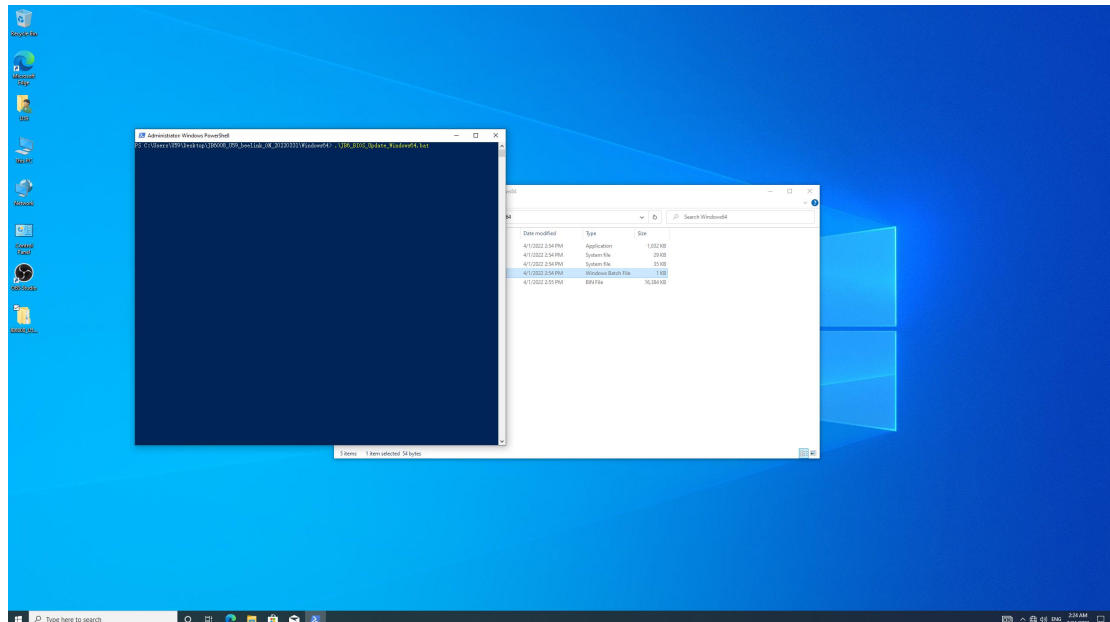


Beelink mini pc U59(JB6) how to Auto Power On

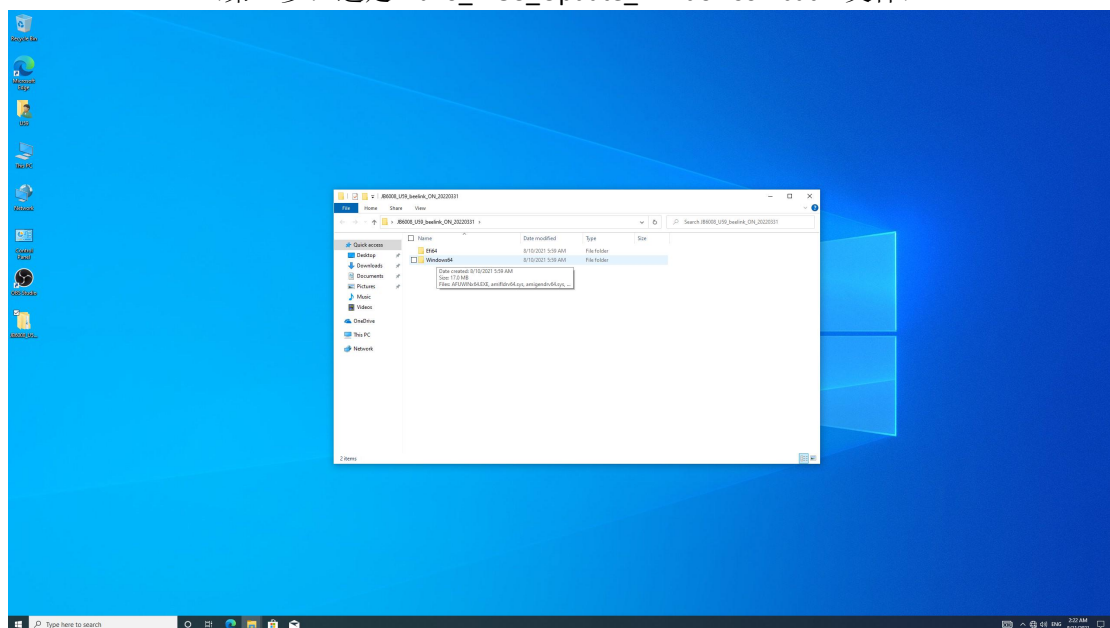
Step 1: Open the Windows64 file

(第一步：打开 Windows64 文件)



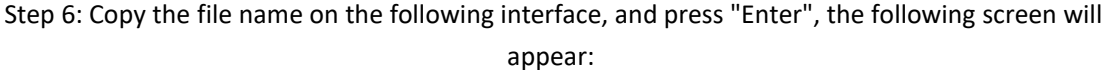
Step 2: Select the "JB6_BIOS_Update_Windows64.bat" file

(第二步：选定 “JB6_BIOS_Update_Windows64.bat” 文件)



Step 3: Click "File" in the upper left corner and left click, slide the mouse to the second option "Open Windows Power Shell", slide the mouse right to the second option "Open Windows Power Shell as Administrator"

(第三步：鼠标点击左上角“File”并左键点击，鼠标下滑至第二个选项“Open Windows Power Shell”，鼠标右滑至第二个选项“Open Windows Power Shell as Administrator”)



The screenshot displays a Windows desktop environment. In the foreground, there are two open windows:

- A terminal window titled "Administrator: Windows RemoteShell" showing a command prompt interface.
- A File Explorer window titled "Windows\\tools". The address bar indicates the path is "B00X_U9J_swjwh_CNK_20220317 > Windows\\tools". The left sidebar shows the navigation pane with "This PC" selected. The main area displays a list of files and folders:

Name	Date modified	Type	Size
arpflood.exe	4/1/2022 2:54 PM	Application	1,082 KB
amsploitd.exe	4/1/2022 2:54 PM	System file	20 KB
msfrpc.exe	4/1/2022 2:54 PM	System file	39 KB
msfrpc64.exe	4/1/2022 2:54 PM	Windows Batch file	7 KB
B00X_U9J.swjwh.CNK.20220317	4/1/2022 2:53 PM	DRT file	70,384 KB

The taskbar at the bottom shows the Start button, a search bar, and several pinned application icons. The system tray on the right indicates the time as 2:58 AM on 4/1/2022.

```
Administrator: Windows PowerShell
PS C:\Users\U59\Desktop\JB6008_U59_beeLink_ON_20220331\Windows64> .\JB6_BIOS_Update_Windows64.bat
C:\Users\U59\Desktop\JB6008_U59_beeLink_ON_20220331\Windows64>AFUWINx64.EXE JB6008_HDA.bin /P /B /N /R /K /L /REBOOT

      AMI Firmware Update Utility v5.14.01.0015
      Copyright (c) 1985-2020, American Megatrends International LLC.
      All rights reserved. Subject to AMI licensing agreement.

Reading flash ..... Done
- ME Data Size Checking ..... Pass
- System Secure Flash ..... Enabled
- FFS Checksums ..... Pass
- Check RomLayout ..... Pass
Loading File To Verify Memory ..... Done
Erasing Main Block ..... Done
Updating Main Block ..... Done
Verifying Main Block ..... Done
Erasing Boot Block ..... 0x006FA000 (62%)
```

Step 7: After completion, it will automatically shut down, which means success.

(第七步：完成后会自动关机，即表示成功)